



Review of the TSIs relating to the subsystem telematics applications

Updated governance

Yann Seimandi – DG MOVE
TEG Plenary – 25.05.2023 – Frankfurt



State of play

- Dec. 22: ERA Recommendations
- Apr. 22: Commission's gap analysis



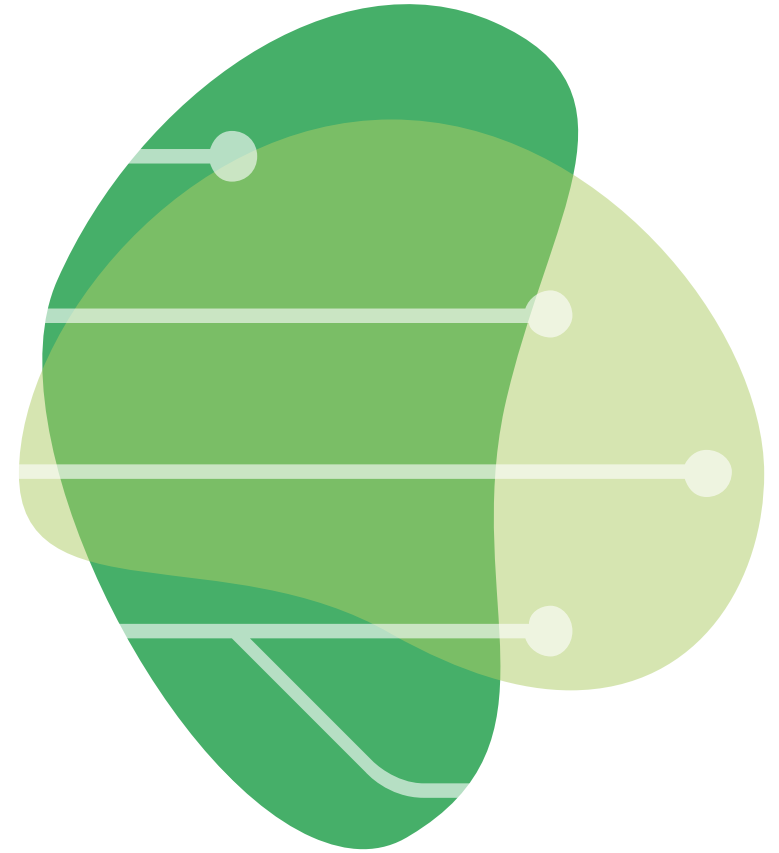
Commission's gap analysis of ERA recommendations

- EC Expert Group #21
08 April 2022
- EC Expert Group #22
25 April 2022

- **Governance**
 - *implementation and monitoring*
 - *enforcement*
 - *reference data (e.g. location codes)*
- **Status of ERA Technical Documents**
- **Use of National Specific Parameters**
- **Data models and standards**



Bridging the gaps



Review of the regulatory framework for interoperable data sharing

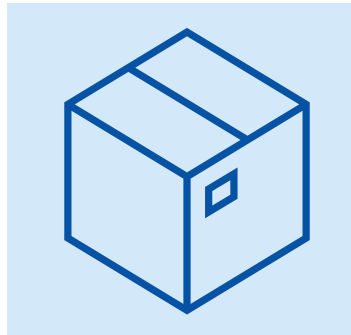
4 pillars



Governance



Digital planning
and operation



Digital freight



Digital ticketing



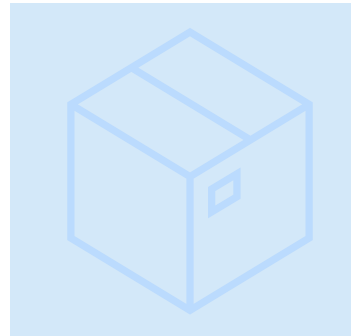
4 pillars



Governance



Digital planning
and operation



Digital freight



Digital ticketing



Revised scope and structure



Planning and operation, including wagon movements



Distribution / ticketing



Updated governance

- Change Control Management (CCM) procedures aligned across regulations (TSIs, telematics, and registers)
- Strengthened coordination and implementation reporting at national level
- Implementation deadlines
- Enforcement process
- Certification process for IT tools, and for PKIs handling
- Forum for exchange on future developments, incl. interface with EU-Rail JU





Streamlined management of allocation of location coding

- Role of National Allocation Entity (NAE) with defined tasks
- RINF as single source of infrastructure description
 - IM-NAE workflow for code allocation and population of RINF
 - Re-use of data by sector/ operational databases



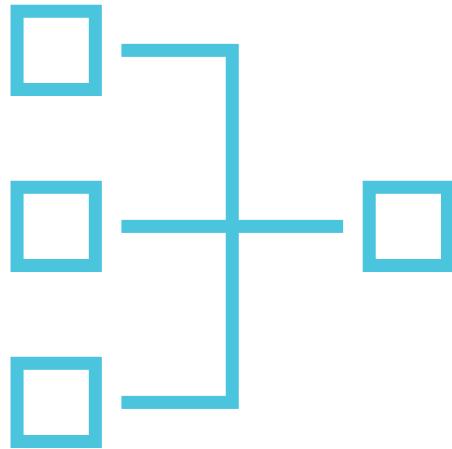
Streamlined Technical Documents

- Lift up of requirements into the text
- Only code lists, data and message models to remain referring to rail ontology
- Guidance into guides
- *Prioritisation of the work per TD*





Data modeling extended to ontology modeling



Data modeling for operations



rail ontology (ERA Vocabulary)

–
Building block of the European Mobility Data Space (EMDS) for rail



Handling of National Specific Parameters



- Notification



- Assessment and cleaning-up against EU regulations, incl. notified national rules accepted



- Publication of accepted parameters



4 pillars



Governance



Digital planning
and operation



Digital freight



Digital ticketing



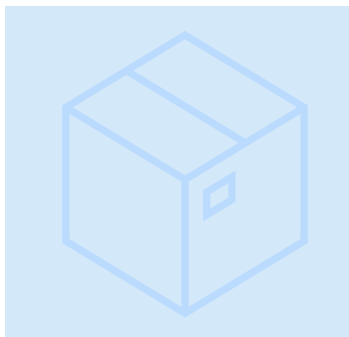
4 pillars



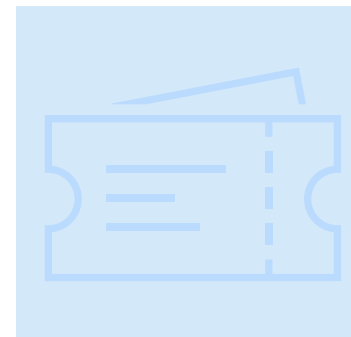
Governance



Digital planning
and operation



Digital freight



Digital ticketing



Interface with operation

- Specifications relating to trains
- Specifications relating to train operations
- Data exchange which may be re-used for safety related applications





Interface with SERA

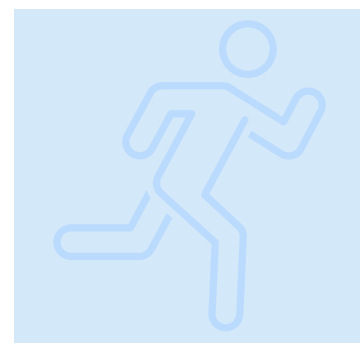
- Links (open point) to EC initiative on rules and procedures for capacity management
 - capacity needs announcements
 - advanced planning
 - capacity restrictions
- Train delay causes
- Requirements for RU complaints purposes



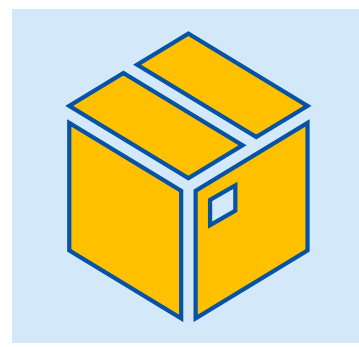
4 pillars



Governance



Digital planning
and operation



Digital freight



Digital ticketing



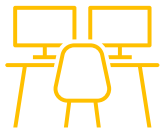
Availability and accessibility of train information



- ETA calculated values



- Geolocation tracking of wagons



- Access to train information systems

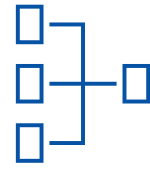


- Use of Automatic Identification and Data Capture technologies

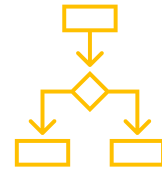




Intermodal transport



- Data exchange for combined transport



- Terminal operations



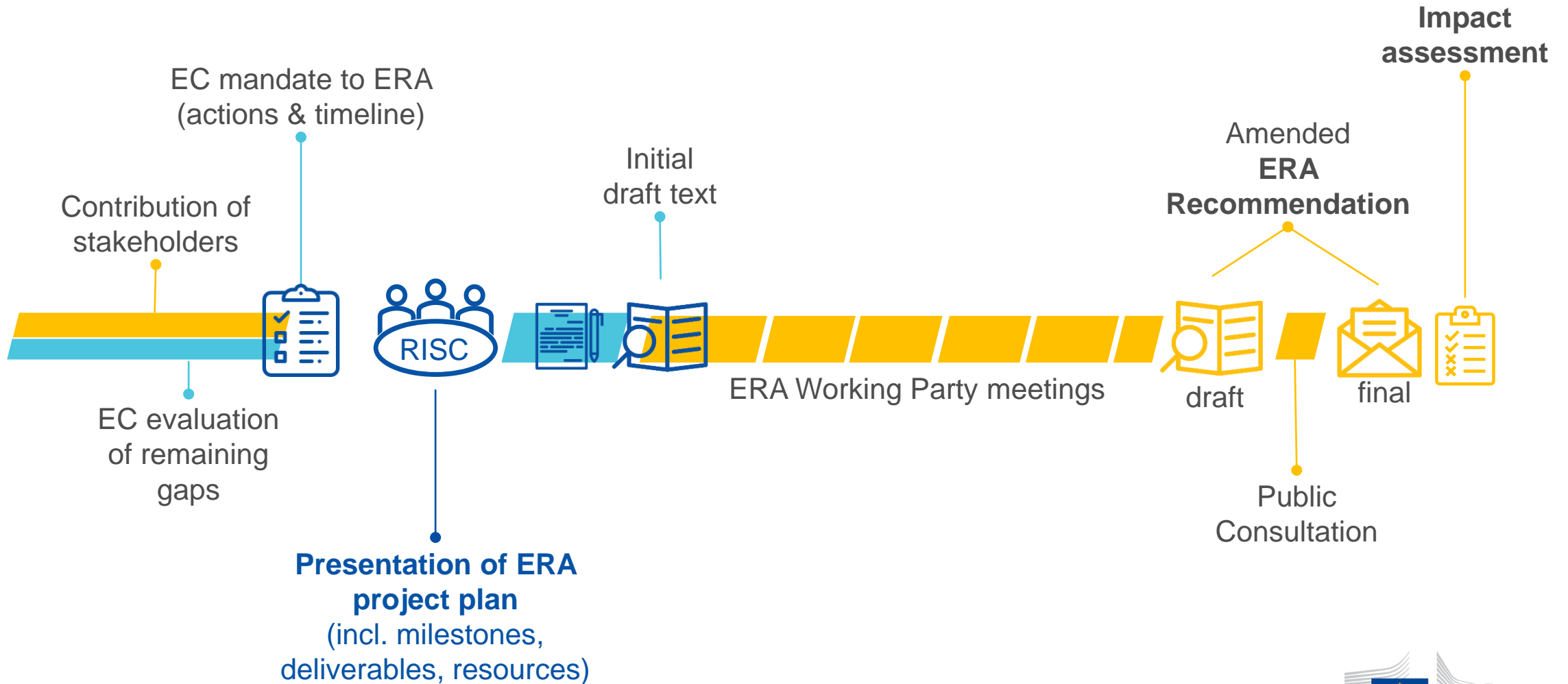
- Connecting terminals to train information systems



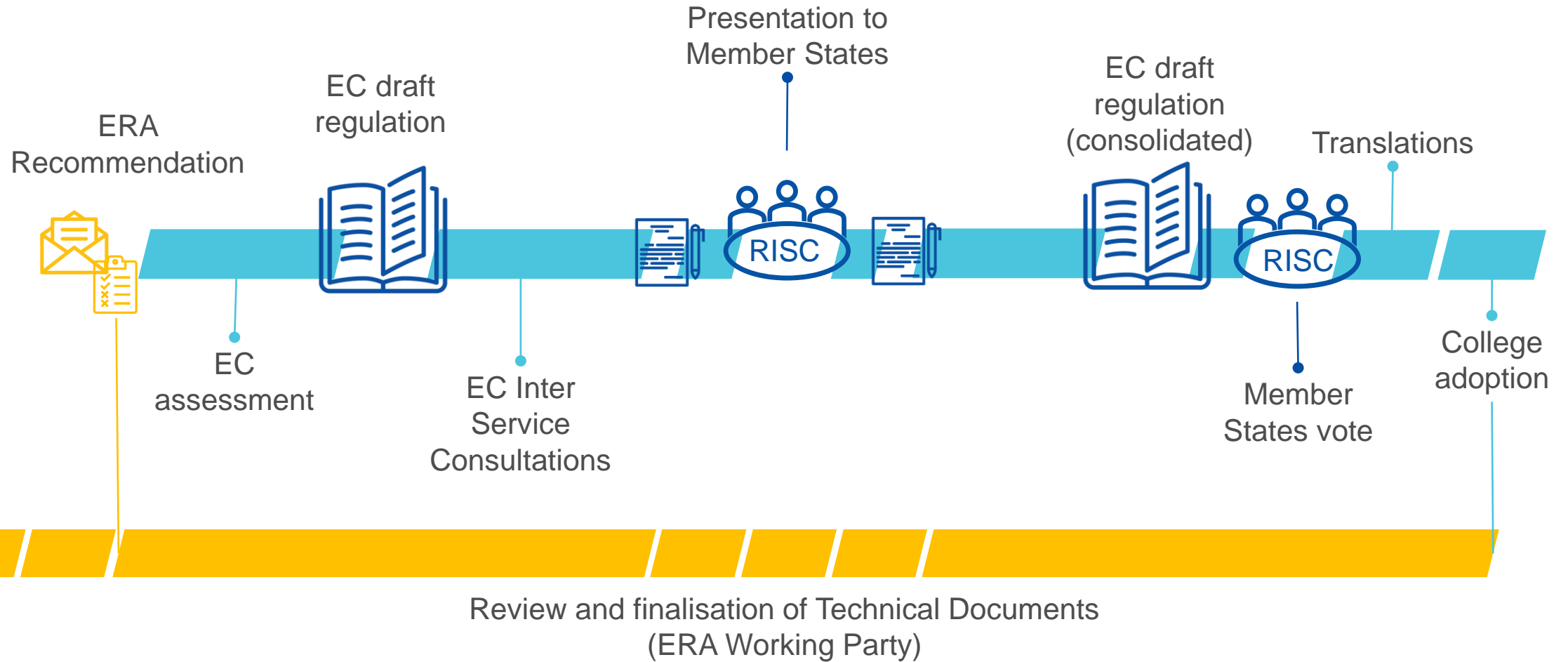
- Quality management



Next steps



Information on EC processes



Interface with EU-Rail JU System Pillar



- Focus on Traffic Management System (TMS)
Task 3



- Develop a unified operational and functional concept
- Specify a functional architecture as inputs for TSIs and Standards



- Sector mirror groups ensuring alignment and supporting the work



Interface with EU-Rail JU Innovation Pillar



- Focus on mobility management
Flagship Project 1 - Motional
 - WS1: planning and operation activities
 - WS2: digital enablers



- Development and demonstration of technical enablers for Capacity and Traffic Management



- 87 project partners



Thank you

Yann Seimandi – DG MOVE (C.4)
yann.seimandi@ec.europa.eu



© European Union 2020

Unless otherwise noted the reuse of this presentation is authorised under the [CC BY 4.0](https://creativecommons.org/licenses/by/4.0/) license. For any use or reproduction of elements that are not owned by the EU, permission may need to be sought directly from the respective right holders.

Slides 2-10: background picture, source: iStock.com