



**NETZE**

# **Telematics Expert Groups Plenary**

TAF/TAP implementation @DB Netz



25.05.2023 | Stefan Müller | DB Netz



NETZE

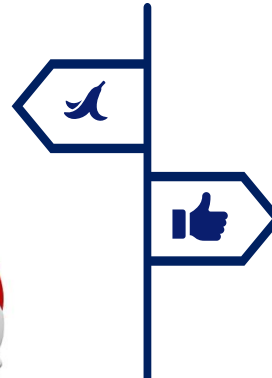
**Nothing's gonna stop us, now.**

Let's go. Together.

# The attractiveness of TAF/TAP



TAF/TAP TSI



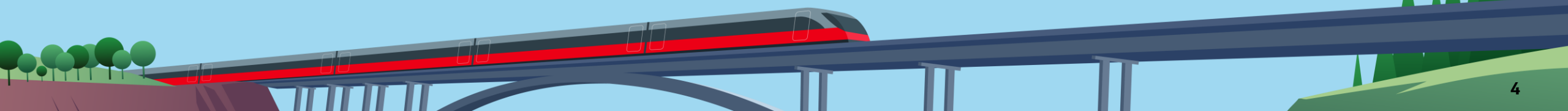
*It's all about being smart... ;-)*

# TAF/TAP implementation @DB Netz.

DB Netz shifts for planning and operational functions to TAF/TAP.



Who wants to run trains on our network, will not getting around TAF/TAP.



# TAF/TAP as a chance.

We believe in unleashing the potentials.

1

Higher level of information. **>>>** Better prediction. Higher reliability.

2

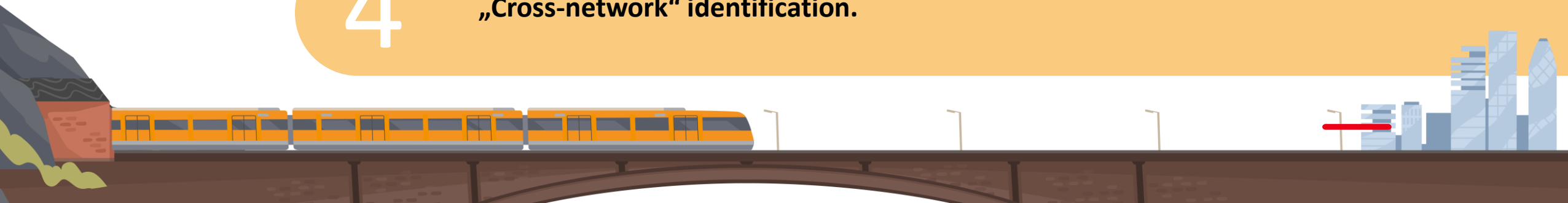
Upscaling communication & exchange of information. **>>>** Improving operational performance.

3

Essential ingredient for the digitalisation in the railway business.

4

„Cross-network“ identification.



# Challenges.

The question is: How to/you deal with them?

1

**TAF/TAP slackness & reservations.**

»»» *Communication campaign (supported by an agency). Design. Attitude. Collaboration.*

2

**Rehabilitating the IT-jungle.**

»»» *Analysis. Convincing. Penetrating. Advantages. Persistence. Potentials. Mindset.*

3

**Players. Politics. Positions. (Parties.)**

»»» *Activity. Posititoning. Lobbying. Alliances. Ressources. Travelling. Convincing. Ressources.*



# 1, 2, 3,... major pain points.



## **TSI Revision**

***We need a fundament to build on!***

- Form follows function.
- Keep it manageable. Reduce complexity. Speed up.
- Solving today's issues today - not the issues of tomorrow.



## **Theme park of initiatives, projects, groups, spin-offs**

***Don't risk the basic implementation!***

- Focus on the essential elements.
- Reduce complexity. Check redundancy.
- Less is more.



## **Politics**

***Come together!***

- Stop moving targets.
- Stop scope creeping.
- More collaboration instead of infightings and power fights.

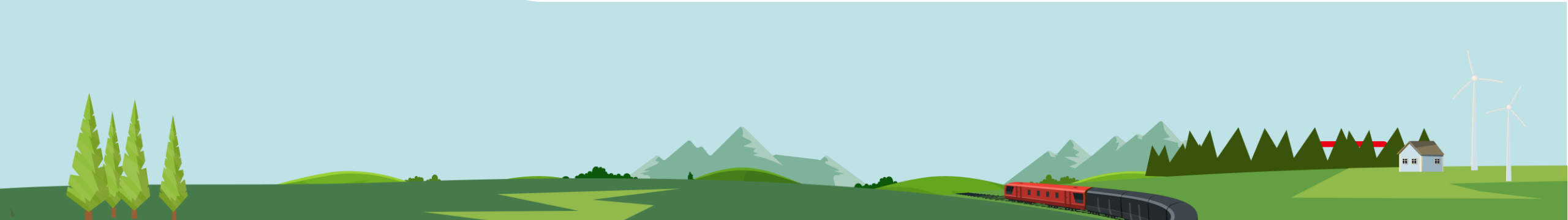
**Our message.**

**Kiss** a **miss**.

**Keep it simple and make it „sexy“ ;-)**  
**Keep it smart and make it smart.**

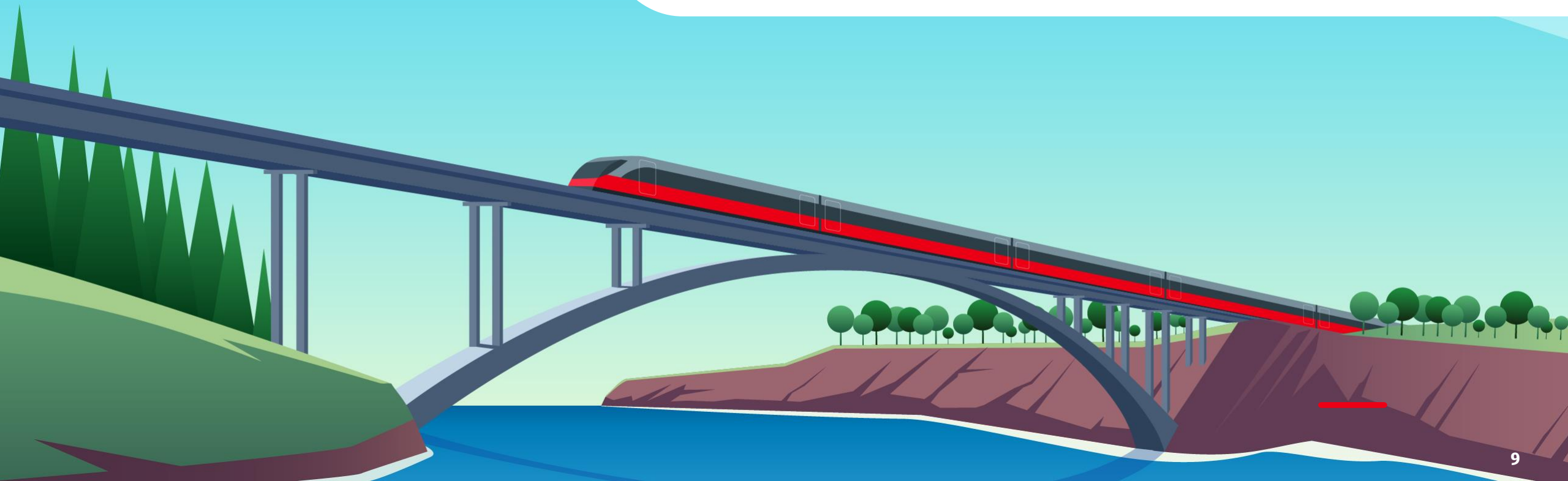


TAF/TAP TSI is an essential part of **smart rail**.





# Thank you!





NETZE